

Longarinas superior e inferior
Vareta de pinho ou caixeta (1/2"x1/2")

Bordo de ataque
Balsa dura (10mm x1/2").

Balancim 2 1/2"

Compensado 3/8"
colado com "epoxi"

Chapeamento central
Balsa 1/16

04 peças
Balsa 1/16

04 peças
Balsa 1/16

04 peças
Balsa 1/16

Bordo marginal
02 peças balsa 3/16

Lastro 14 gramas

Reforços
balsa dura 3/16

Bordo de fuga
Balsa dura (3/8"x20 mm)

Mesa para
balancim compensado 3 mm.

Montante com
madeira dura.
Ajustar conforme motor.

Conjunto do leme
Balsa dura 3/32

Nervuras centrais
rebolixadas p/chapeamento
03 peças balsa dura 1/16

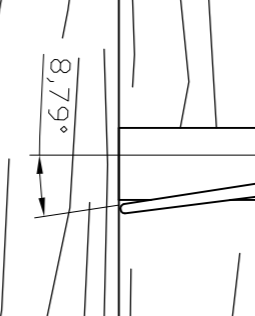
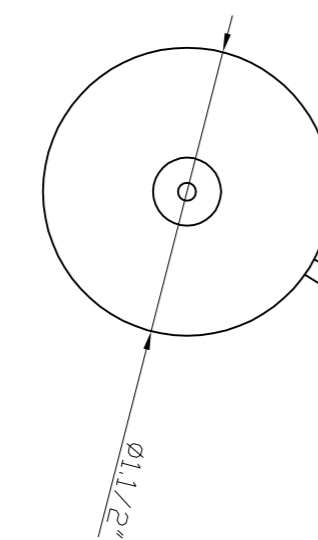
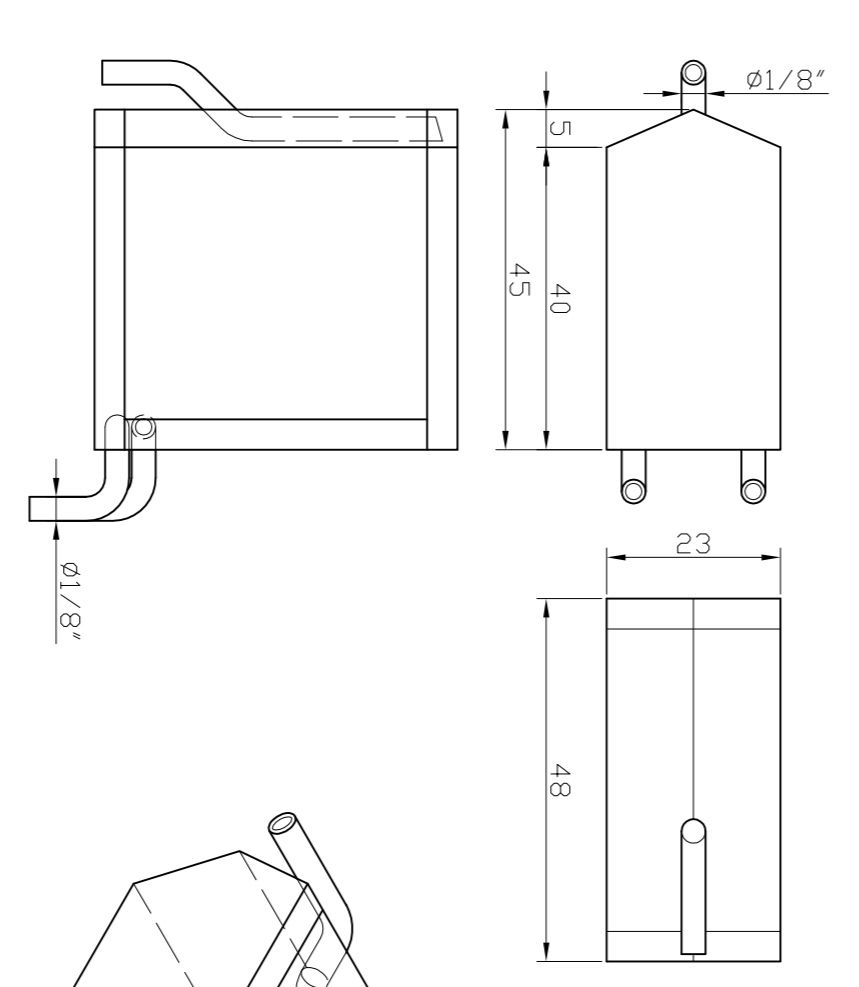
Nervura comum
14 peças balsa 1/16

Balsa dura 3/16

Balsa dura 3/8

Reforçar com tecido
bem colado

Aço mola
Ø 1/16



Aço mola
Ø 3/32

Type: stunt
Wing span: 875 mm
Fuselage length: 575 mm
Wing area: 01625 m²
Stab area: xx square inches
Total weight: xxx square inches
Wing loading: 15 to 19 two-stroke
Line diameter/length: ..

MANCACCA II			01/01
C/L STUNNER - PLAINER - SPORT			
Designer: ... Designer by: ... Rua Fátima, 14, 405 Santos240 Curumim - Fátima/SP - SP Vendedor: ... Vendedor: ...		scale	1/1
		A0-001	08/2003