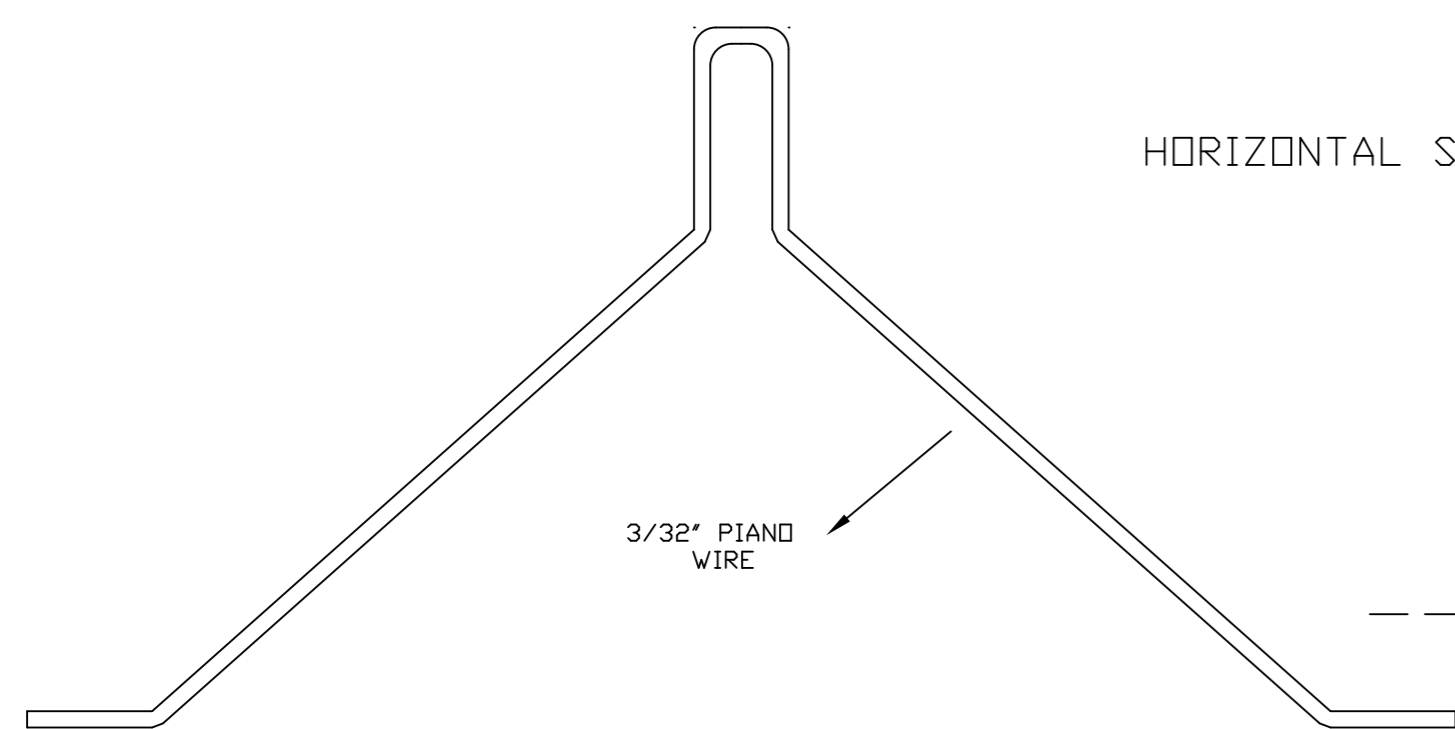
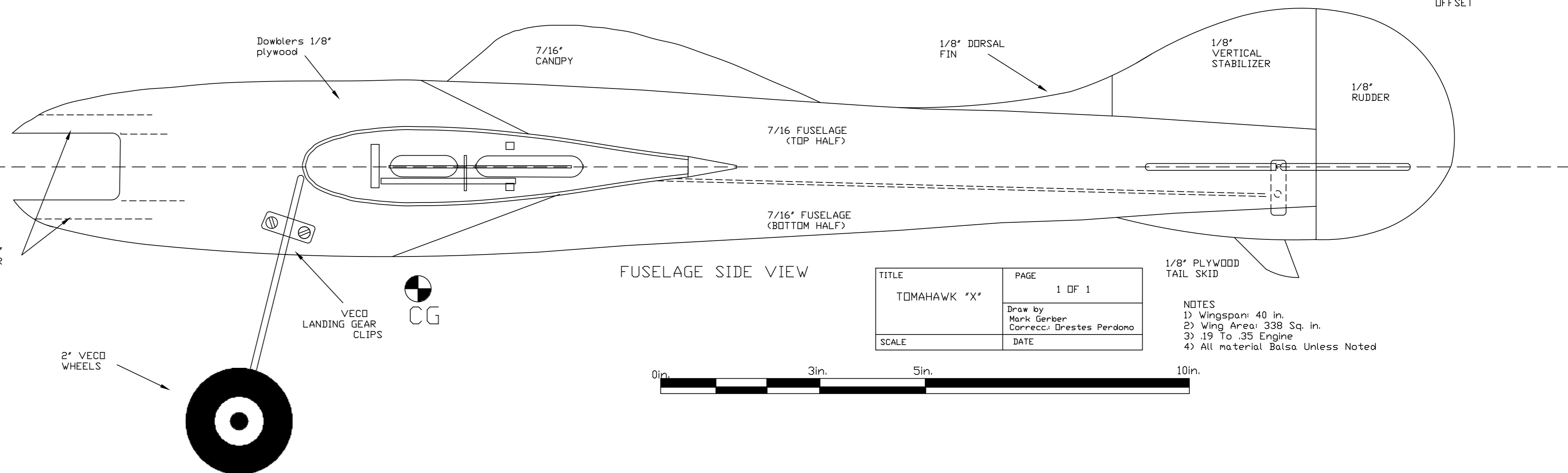


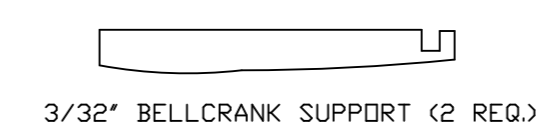
HORIZONTAL STABILIZER TOP VIEW



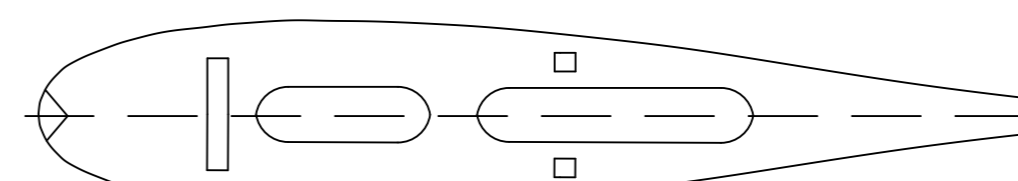
LANDING GEAR



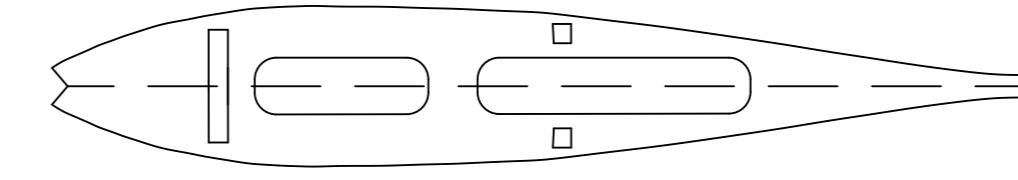
FUSELAGE SIDE VIEW



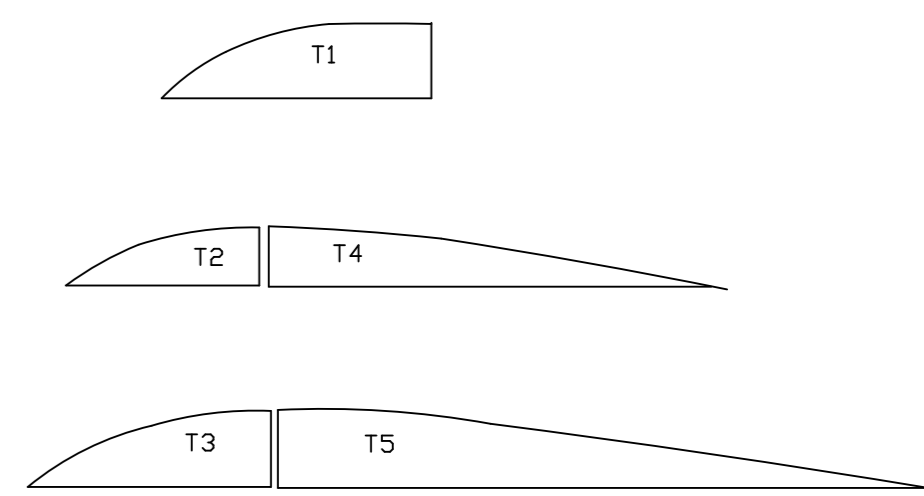
3/32" BELLCRANK SUPPORT (2 REQ.)



3/32" WING RIBS (16 REQ.)

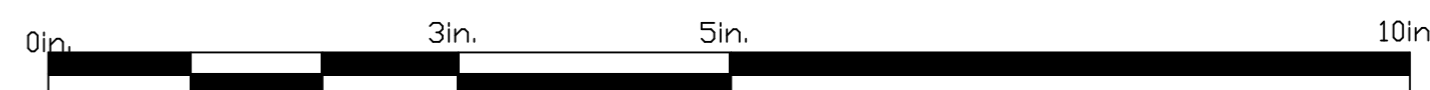


3/32" CENTER RIBS (4 REQ.)



1/16" TIPS RIBS (4 EA. REQ.)

TITLE	PAGE
TOMAHAWK "X"	1 OF 1
Draw by	DATE
Mark Gerber	
Correcc. Drestes Perdomo	
SCALE	



- 1/8" PLYWOOD TAIL SKID
- NOTES
- 1) Wingspan: 40 in.
  - 2) Wing Area: 338 Sq. in.
  - 3) 19 To 35 Engine
  - 4) All material Balsa Unless Noted



CG